

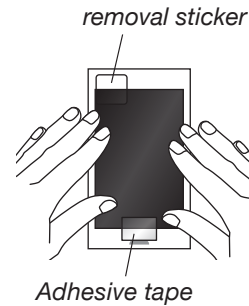
How to apply The Privacy Filter (Screen Protector)

- ① Before applying the filter to the device, confirm the filter's position and fit on the device.

*In order to make application easier, the size of the filter has been made slightly smaller than the screen.

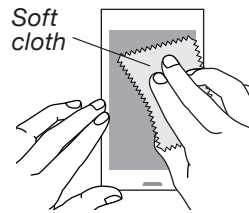
*In the event that the outer edges of the screen panel are rounded to create a convex surface (Ex.iPhone 6, Galaxy S6 edge), the filter should cover only the flat portion of the screen (the entire surface of the panel may not be covered).

*Please take care that the filter is not upside-down.



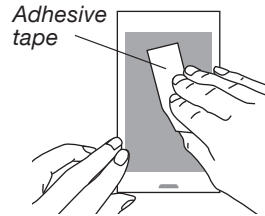
- ② Use a soft cloth, wipe the whole of LCD screen to remove dirt and dust and clean it.

*Using strong force to wipe the LCD screen may cause damage. Please wipe gently and carefully.



- ③ Use adhesive tape to remove any remaining dust or dirt from the LCD screen.

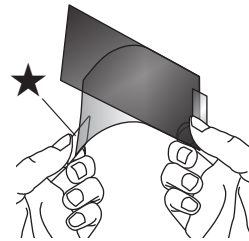
*This step is most effective if it is done immediately before attaching the filter.



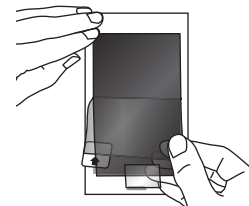
- ④ Peel off about half of the filter from the backing film.

Please avoid touching the adhesive surface to avoid leaving fingerprints.

*The surface with [★:removal sticker] attached is the backing film.

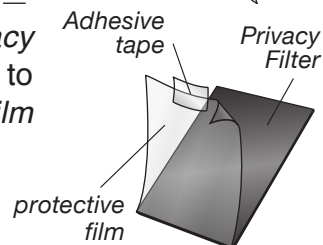


- ⑤ Place the filter on the edge of the LCD screen that you checked earlier, and apply it slowly, taking care not to let air or dirt get inside. Peel off the remaining backing film and affix the filter onto the whole of the LCD screen panel.



- ⑥ To prevent scratches on our filter (*The Privacy Filter*), there is *the protective film* attached to its surface. Please peel off *the protective film* using adhesive tape as a final step.

*Please do not forget to peel this film off.



Please check our website explaining how to apply the Privacy Filter with pictures.

You can also download pdf files of the manual.

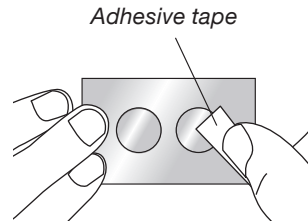
http://www.asdec.co.jp/product/how_rp_eng.html ↓↓



How to apply the Camera Lens Film

① Use a soft cloth and gently clean the camera lens.

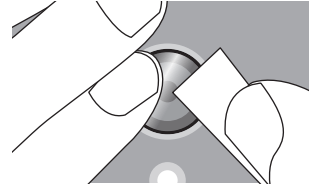
② Peel off one transparent film for camera lens from the backing film and leave the film half peeled off. Apply adhesive tape (Ex, Scotch tape) to about half of the film for camera lens, and peel it off the backing film.



*Please note: If you put adhesive tape on the film entirely not partially, it may become difficult to apply.

③ Place the film on the camera lens, which has now been detached from the backing film.

Once you have decided on its position, use one finger to place the film on the camera lens, apply it firmly to the camera lens and then you are ready to go.



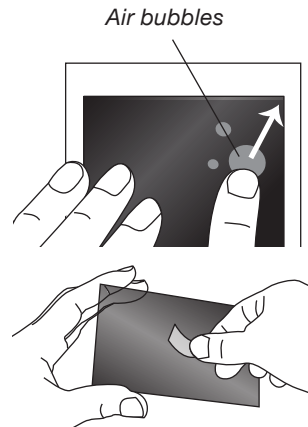
What to do in the following cases

If air bubbles are formed:

○ Bigger bubbles can be removed by pushing the filter outward with your finger.

*Please rest assured that small air bubbles without any trapped dust or dirt will naturally disappear within one or two days.

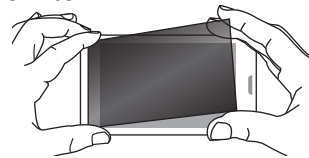
○ If there is trapped dust or dirt, use adhesive tape to peel off the filter, and use the adhesive surface of the tape to take it away. You can also clean the dirty area of the filter with water (if your device is not waterproof, make sure that any water drips are dried off before affixing the filter again.)



If the filter is not affixed in the right place:

(1) Use adhesive tape to temporarily peel off the filter.

(2) Hold the edge of the filter and affix it again onto your device. Take care not to touch the adhesive surface of the filter with your fingers.



How to peel off the filter:

(1) Take a long strip of strong adhesive tape and affix it to one of the four corners of the filter.

(2) Lift] off the filter gently by pulling on the adhesive tape horizontally, parallel to the filter. Once air goes into the edge of the filter, it should come off easily.

